

## ADC Series



### Access Doors

- Fast and simple installation reduces time and costs
- Self adhesive template allows rapid and simple marking of duct for cutout
- Galvanised steel pressing ensures strength and resistance to corrosion
- One joint gasket reduces risk of leakage
- Quick release knobs for rapid removal and replacement
- Captive knobs - no possibility of loss

# ADC Series

## Circular Access Doors



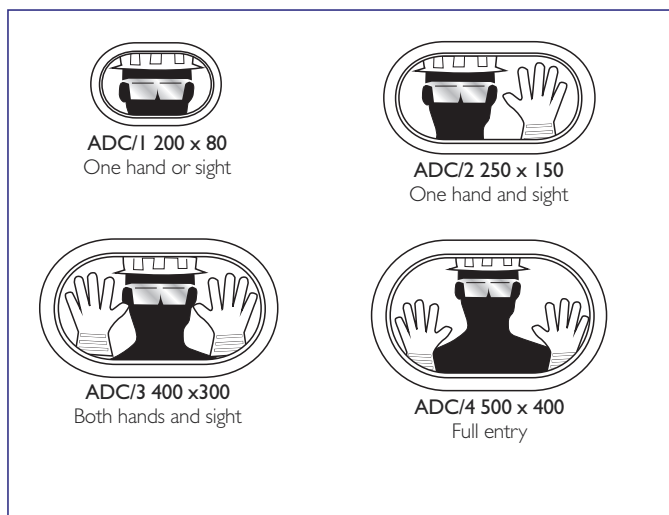
### Introduction

The ADC Series Duct Access Doors have been designed to provide a quick and efficient means of access/inspection to in-duct items such as control dampers, filters, fire dampers, etc., and vital access for cleaning purposes.

### Features

- Fast and simple installation reduces time and costs
- Self adhesive template allows rapid and simple marking of duct for cutout
- Galvanised steel pressing ensures strength and resistance to corrosion
- One joint gasket reduces risk of leakage
- Quick release knobs for rapid removal and replacement
- Captive knobs - no possibility of loss
- Available for both circular and rectangular ducting

### Size Guide



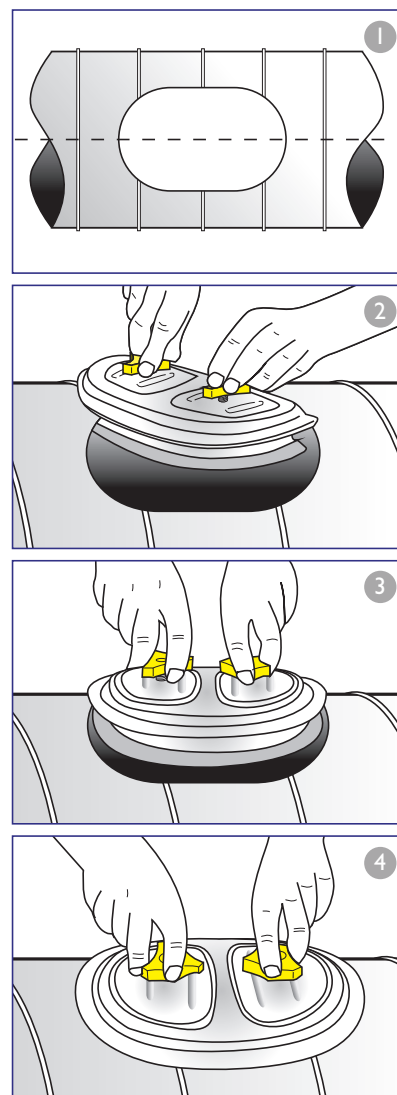
### Circular Duct Access Doors

Designed for circular duct applications from 80mm diameter to 1600mm diameter ducting.

ADC Series Circular Duct Access Door			
Model No.	L x W (mm)	Standard Duct Diameters (mm)	Weight (kg)
ADC/1	200 x 80	80, 100, 125	0.4
ADC/2	250 x 150	150, 160, 180, 200, 224, 250, 280, 300, 315, 355, 400, 450	0.7
ADC/3	400 x 300	400, 450, 500, 560, 630, 711, 762, 813, 914, 1016	1.8
ADC/4	500 x 400	1016, 1120, 1250, 1400, 1600	4.2

### Installation

- 1 Mark centre line on duct and attach self-adhesive template to duct ensuring alignment of template with centre line of duct using the blue datum line on template. Cut opening to inside of template.
- 2 Fully slacken captive hand knobs. Feed inner door diagonally through opening at approximately 30° to centre line of duct.
- 3 Centralise door and pull gently to locate inner part into duct.
- 4 Tighten knobs fully.





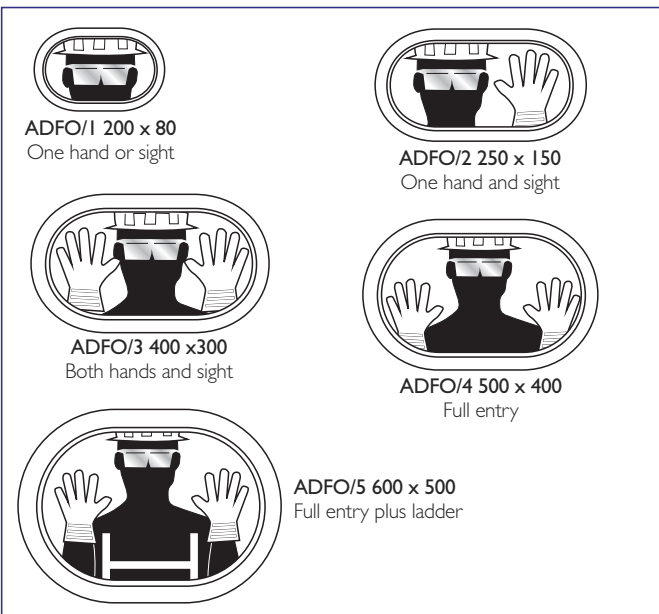
## Introduction

The ADFO Series Duct Access Doors have been designed to provide a quick and efficient means of access/inspection to in-duct items such as control dampers, filters, fire dampers, etc., and vital access for cleaning purposes.

## Features

- Fast and simple installation reduces time and costs
- Self adhesive template allows rapid and simple marking of duct for cutout
- Galvanised steel pressing ensures strength and resistance to corrosion
- One joint gasket reduces risk of leakage
- Quick release knobs for rapid removal and replacement
- Captive knobs - no possibility of loss
- Available for both circular and rectangular ducting

## Size Guide



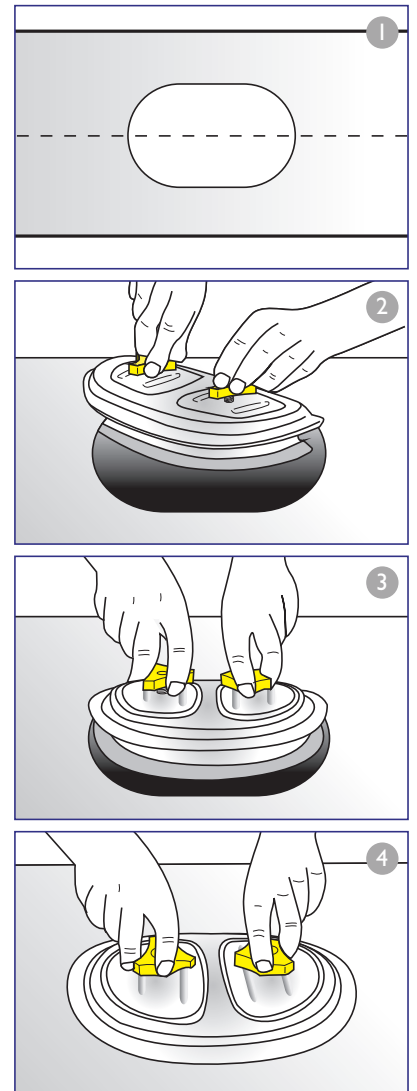
## Flat Oval Duct Access Doors

Designed for rectangular duct applications.

ADC Series Flat Oval Duct Access Door			
Model No.	L x W (mm)	Box Quantities	Weight (kg)
ADFO/1	200 x 80	50	22
ADFO/2	250 x 150	25	20
ADFO/3	400 x 300	20	38
ADFO/4	500 x 400	10	45
ADFO/5	600 x 500	5	38

## Installation

- 1 Mark centre line on duct and attach self-adhesive template to duct ensuring alignment of template with centre line of duct using the blue datum line on template. Cut opening to inside of template.
- 2 Fully slacken captive hand knobs. Feed inner door diagonally through opening at approximately 30° to centre line of duct.
- 3 Centralise door and pull gently to locate inner part into duct.
- 4 Tighten knobs fully.



# ADC Series

## Access Doors – Product Specification springs



### Product Specification

#### Door

The door comprises of 2 panels - one inner and one outer. These are manufactured from the following material thicknesses:

Door Size	Thickness
200 x 80	0.7mm
250 x 150	0.7mm
400 x 300	0.9mm
500 x 400	1.2mm
600 x 500	1.2mm

#### Door

Manufactured from galvanised mild steel to BS EN 10142: 1991, coating class FEPo2b Z275 Na, and held apart by two conical springs.

these conical springs are fitted onto two 10mm diameter zinc plated bolts which have yellow polypropylene handles fitted to compress the two door panels together either side of the duct.

#### Gasket

Self-extinguishing 15mm x 5mm adhesive-backed E.V.A. foam seal is used as a gasket fitted to the inner panel for sealing the duct. The gaskets are fitted as standard.

### Ordering Details

Circular Access Doors

Model ADC/2

Size: 250mm x 150mm

Duct Size: 200 duct size

Quantity: 40

would be written as:

**ADC/2 - for 200mm duct - 40qty**



Flat Oval Access Doors

Model ADFO/2

Size: 250mm x 150mm

Quantity: 60

would be written as:

**ADFO/2 - 60qty**



### Air, Fire and Smoke Control Products in the BSB Range:



For full details of the complete BSB Product Range, please refer to our individual product brochures, sales office or website.

### BSB Engineering Services Limited

Unit 56, Trinity Trade Centre, Mill Way, Sittingbourne, Kent ME10 2PD, UK • Tel: +44 (0)1795 422609 • Fax: +44 (0)1795 429543

For purchase orders and order related enquiries, please email: [orders@bsb-dampers.co.uk](mailto:orders@bsb-dampers.co.uk)

For pricing, technical and general enquiries, please email: [enquiries@bsb-dampers.co.uk](mailto:enquiries@bsb-dampers.co.uk)

Website: [www.bsb-dampers.co.uk](http://www.bsb-dampers.co.uk) • A member of the Maico group

BSB Engineering Services Ltd. reserves the right to modify or withdraw any specification without prior notice that may result from continuous product development. The information contained within this brochure is correct at the time of going to press. (ADC-04-2014)

